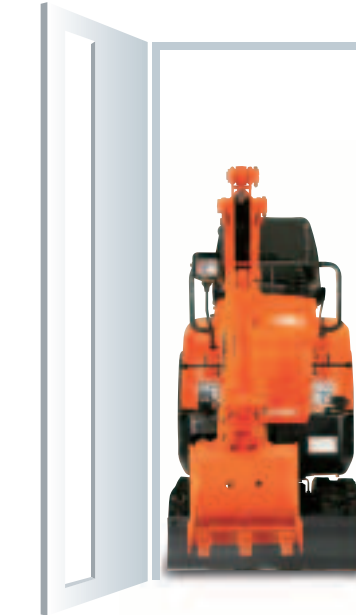


KUBOTA ZERO-TAIL SWING MINI-EXCAVATOR

U10-3



Lifting points

To permit access to confined spaces as well as easy transport, the U10-3 has a three-point lifting feature.

Protection

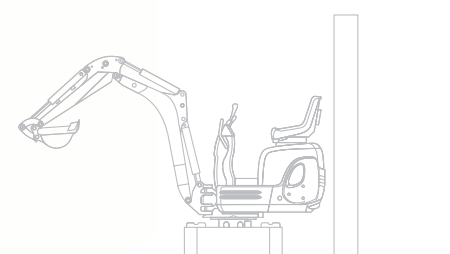
Note the clean, hose-free look of the U10-3's boom? That is because all of its hydraulic hoses are uniquely hidden and protected inside the boom. The boom cylinder is well protected due to its location at the top of the boom.

Walk-through operator space

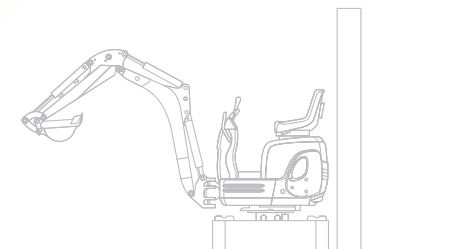
Open at both ends, the U10-3 allows for quick entry or exit from either side.

Zero tail swing

To operate at the highest level of safety, simply adjust track width to 990mm. At this width, the rear counterweight will always be within the width of the track frame. This prevents any damage from occurring to the engine cover allowing the operator to focus more on the job at hand.



Our previous model → ←

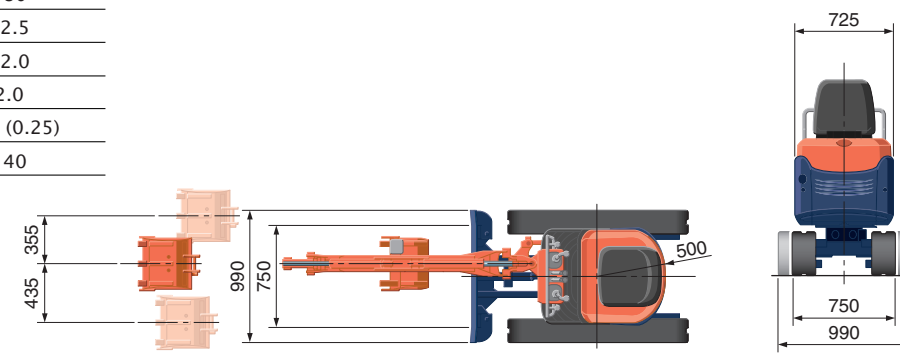
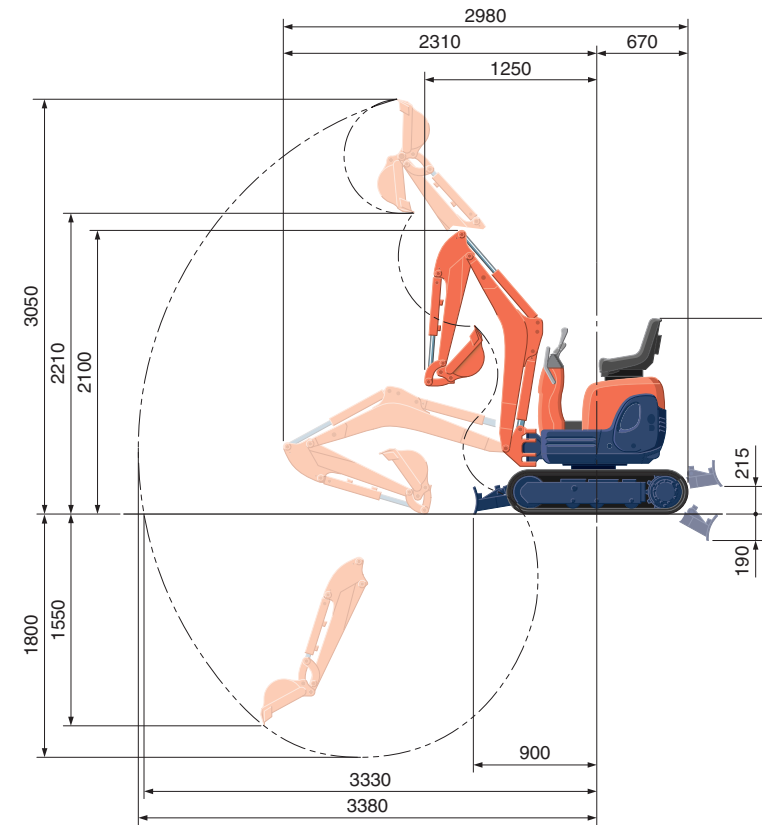


U10-3 → ←

SPECIFICATIONS

*with rubber shoe type			
Machine weight	Rubber crawler	kg	990
Bucket capacity, std. SAE/CECE		m ³	0.024/0.020
Bucket width	with side teeth	mm	398
	without side teeth	mm	380
Model			D722-BH-4
Type			Water-cooled, diesel engine E-TVCS (Economic, ecological type)
Engine	Output ISO90249	PS/rpm	10.2/2050
		kW/rpm	7.4/2050
	Number of cylinders		3
	Bore x stroke	mm	67 x 68
	Displacement	cc	719
Overall length	mm		2980
Overall height	mm		1420
Swivelling speed	rpm		8.3
Rubber shoe width	mm		180
Tumbler distance	mm		1010
Dozer size (width x height)	mm		750/990 x 200
Hydraulic pumps	P1, P2		Gear pump
	Flow rate	ℓ/min	10.5+10.5
	Hydraulic pressure	MPa (kgf/cm ²)	17.6 (180)
	P3		Gear pump
Max. digging force	Arm	kN (kgf)	5.4 (550)
	Bucket	kN (kgf)	10.4 (1060)
Boom swing angle (left/right)	deg		55/55
Auxiliary circuit	Flow rate	ℓ/min	21.0
	Hydraulic pressure	MPa (kgf/cm ²)	180
Hydraulic reservoir	ℓ		12.5
Fuel tank capacity	ℓ		12.0
Max. travelling speed	km/h		2.0
Ground contact pressure	kPa (kgf/cm ²)		24.5 (0.25)
Ground clearance	mm		140

WORKING RANGE

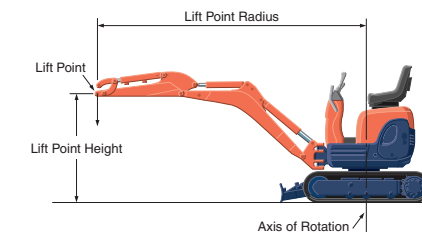


Unit: mm

LIFTING CAPACITY

Lift Point Height	kN (ton)					
	Lifting point radius (2.0m)			Lifting point radius (2.5m)		
	Over-front		Over-side	Over-front		Over-side
	Blade Down	Blade UP		Blade Down	Blade UP	Over-side
1.0 m	2.7 (0.28)	2.0 (0.21)	1.7 (0.18)	2.2 (0.22)	1.4 (0.15)	1.2 (0.13)
0.5 m	3.2 (0.32)	1.9 (0.20)	1.6 (0.17)	2.3 (0.24)	1.4 (0.14)	1.2 (0.12)

Please note:
 * The lifting capacities are based on ISO 10567 and do not exceed 75% of the static tilt load of the machine or 87% of the hydraulic lifting capacity of the machine.
 * The excavator bucket, hook, sling and other lifting accessories are not included on this table.



* Working ranges are with Kubota standard bucket, without quick coupler.
 * Specifications are subject to change without notice for purpose of improvement.



KUBOTA (U.K.) LTD
 Dormer Road, Thame Oxfordshire,
 OX93UN, U.K.
 Phone : 01844-214500
 F a x : 01844-261568



Two-piece design dozer hoses
 When an on-site replacement of a dozer cylinder supply hose is necessary, its two-piece design simplifies the job.

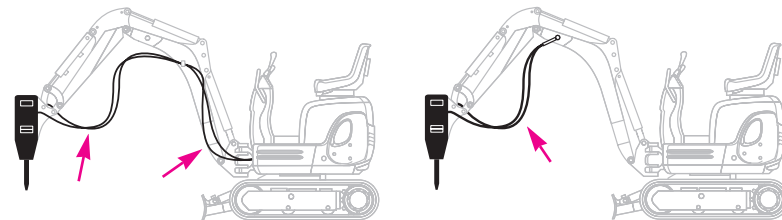
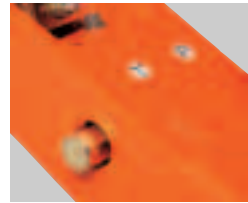
Zero tail swing. Ultra compact. Easy to operate.
The Kubota U10-3 is everything you ever wanted in
a zero tail swing mini excavator, and more.

Safer operation

To greatly reduce the risk of loose hoses from boom-mounted or hand-held attachments catching on nearby objects, the U10-3 has its hydraulic service port smartly located at the end of the boom.

Protected hydraulic service port

With the U10-3, you'll never add hydraulic service port pipes again-it comes equipped with them, all the way to the end of the boom. To reduce the risk of damaging the hydraulic piping, the U10-3 is also the only excavator in its class to have its pipes hidden inside the boom.



Our previous model

U10-3



Model : K008-3

Improved digging arm circuit

Increases the crowd speed, eliminates cavitation, and significantly improves control for fine grading.

Easy and quick greasing

With all front attachment lubrication points located on the right-hand side, you'll grease quickly while never forgetting to hit every point.



Hydraulic control system

Now fitted with hydraulic servo controls, the U10-3's new hydraulically control system means smoother operation, improved feel, and an increase in digging productivity of approximately 8%.

Kubota E-TVCS engine

Highly trusted in the compact excavator market, the efficient combustion created by our engine's unique Three Vortex Combustion System reduces exhaust emission, noise, and vibration. Its new layout also puts most components within easy reach for faster maintenance.

Fully opening engine cover

Fast access to most of the engine's components is made possible by the fully opening engine cover.



Adjustable track gauge

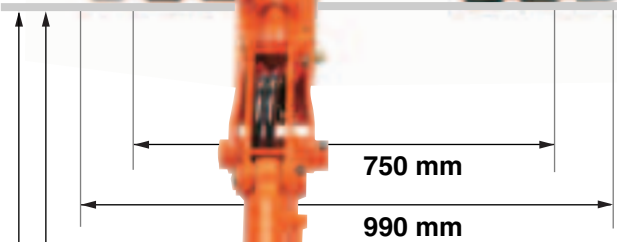
By operating one lever, the U10-3's hydraulically adjustable track gauge reduces in seconds-down to 750mm-to enable navigation of narrow spaces. Conversely, widen the track gauge all the way out to 990mm-which provides approximately a 7% increase in stability when compared to our previous model-for a higher level of security even while operating with hydraulic breakers.



With the simple removal of one pin, its quick-fold blade adjusts in size instantly.



When adjusted down to 750mm, the U10-3 can easily fit through most doorways, permitting access inside of buildings.



1,550 mm

1,800 mm

